

The background image shows the exterior of a building with a dark stone wall. The name "SUSAN J. GIONFRIDDO JUVENILE JUSTICE CENTER" is mounted on the wall in white, raised letters. The text is arranged in two lines: "SUSAN J. GIONFRIDDO" on the top line and "JUVENILE JUSTICE CENTER" on the bottom line. The word "CENTER" is significantly larger than the other words. In the foreground, there are green bushes with small orange flowers. A dark teal diagonal overlay covers the left side of the image.

SUSAN J. GIONFRIDDO
JUVENILE JUSTICE CENTER

COMMUNITY VIRTUAL LISTENING FORUM

Juvenile Justice Realignment

September 24, 2021

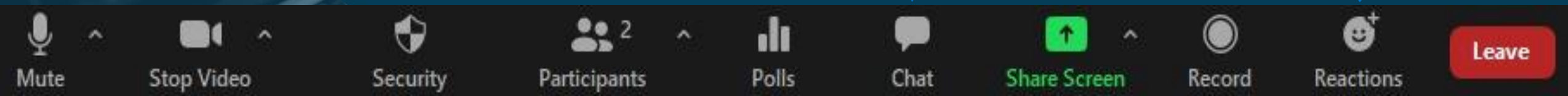
Mute or unmute microphone.

Stop or start video.

Open chat panel.

Open participants panel. Raise hand.

Leave meeting.

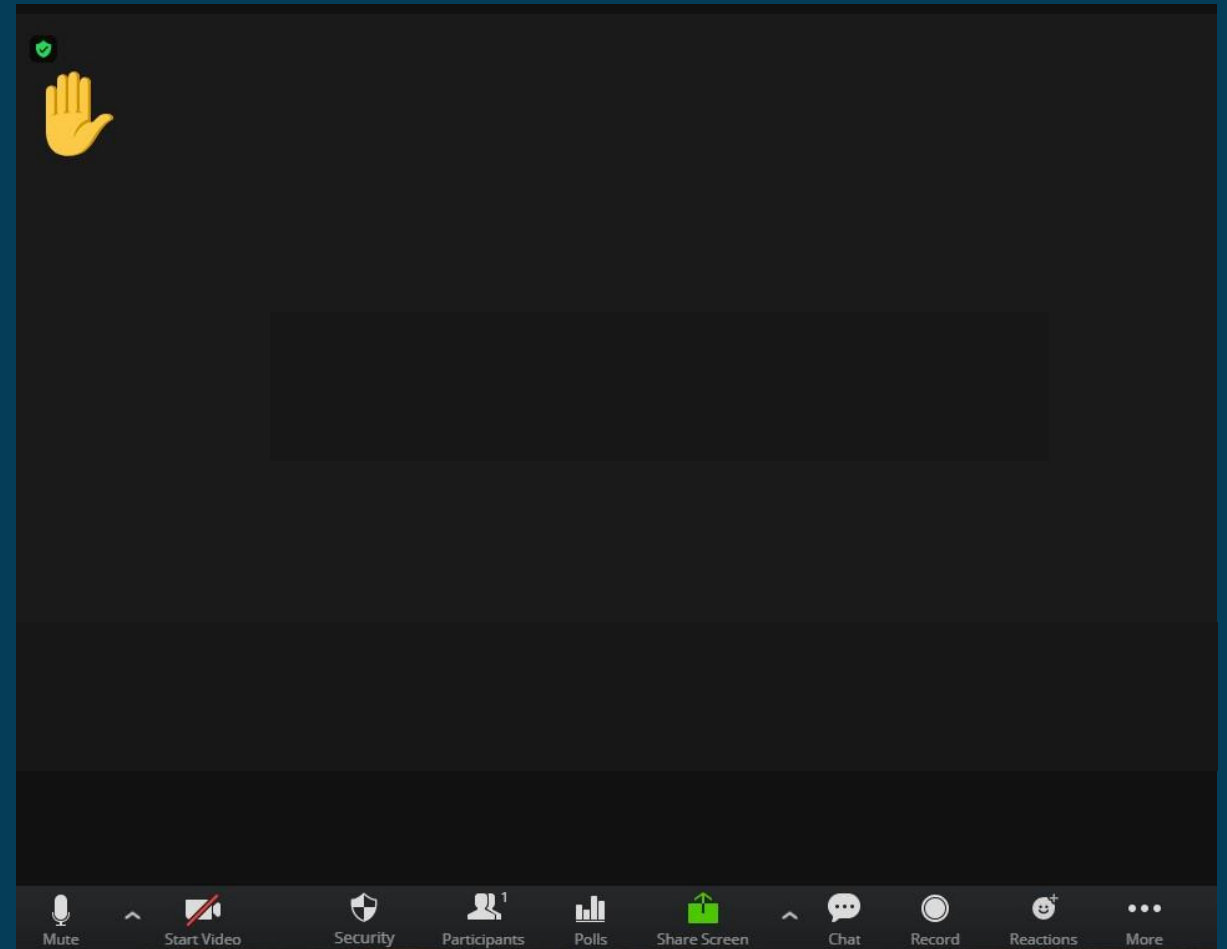


Navigating Zoom

Select "Raise hand".



Raised hand will appear on the upper left-hand corner of the screen.



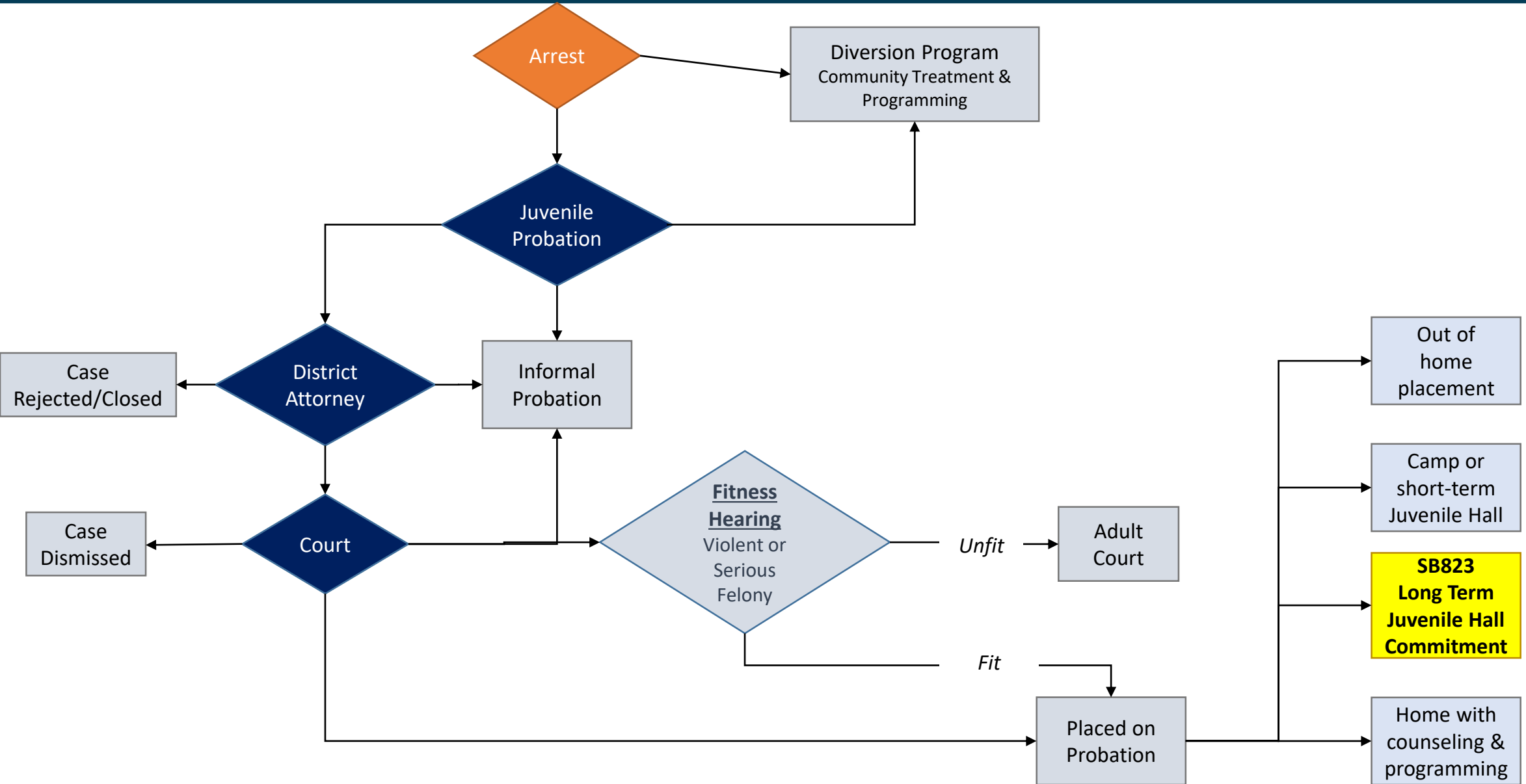
Navigating Zoom

Welcome & Opening Remarks



TANJA HEITMAN
Chief Probation Officer
Santa Barbara County

Juvenile Process



Eight Guiding Principles for Recidivism Reduction



**Risk
Needs
Responsivity**

Juvenile Realignment (SB823)

JULY 1, 2021

Division of Juvenile Justice no longer accepts youth committed by counties

Realigns the responsibility for care, custody and supervision of these youth to counties, along with an allocation of funding to provide for these needs

Data collection and performance measures to assess youth progress and well-being

Collection of youth, caretaker/family and community voice

Juvenile Realignment Plan (SB823)

SUBCOMMITTEE FORMED

Includes representation from:
Probation, District Attorney, Public Defender, Social Services, Behavioral Wellness, Office of Education, Superior Court, County Board of Supervisors, and community member representatives.

PLAN REQUIREMENTS

Plan to describe facilities, programs, services, supervision and reentry strategies needed to provide appropriate rehabilitation and supervision services for youth who were otherwise eligible for commitment to the Division of Juvenile Justice.

INTERVENTIONS

- Continuing all services already in place
- Additional services and programs will be built through partnerships and contracts with community-based organizations
- Provided as needed on an individual basis to ensure that each youth's needs are identified and treatment, training and education are provided

DATA & OUTCOMES

- Monitoring outcomes for youth in individual programs by using pre/post tests and other defined outcome measures attached to each provider's contract
- Psychological & Social Functioning, Treatment Engagement, Trauma

Realignment Plan Roadmap

JUNE

JJCC
Subcommittee
survey

AUGUST

Family & Youth
Surveys Launched

SEPTEMBER

- Kids Network
Presentation
- Community
Listening Forum

OCTOBER

JJCC
Subcommittee
interviews

DECEMBER

- Presentations to the
JCC Subcommittee
and to the County
Board of
Supervisors
- Submission to the
BSCC

A person is sitting on a paved path, looking down. The path has a large white cross and a circle painted on it. The background shows a grassy area and trees. A large teal diagonal shape is overlaid on the right side of the image.

Youth Profile

- Males between age 16 or 17 at time of disposition
- Committing offense of a serious or violent offenses involving harm (physical, psychological, and/or monetary) to a victim
- Gang involvement
- History of personal trauma
- 1/3 with a mental health diagnosis at time of commitment
- Prior juvenile justice involvement and attempted interventions
- Anticipating 2-5 youth committed annually

What Guides Us

The Annie E. Casey Foundation
“Elevating Care for Youth in Custody”



Lead with values that promote equity and well-being



Maintain an uplifting and safe environment



Develop staff to build positive and supportive relationships



Provide varied, useful, and evidence based programming



Ground practice and culture in knowledge of adolescent development



Treat family members as partners



Encourage community connections



Incorporate continuous quality control

Eight Principles to Transform Care for Young People in the Justice System






Lead with values that promote equity and well-being

- Building officer awareness around disparities, injustices, and oppression




Maintain an uplifting and safe environment

- Creating a “safe space for healing”
- Mindful of open space, natural light, greenery, home-like where possible to minimize stress and trauma
- Physical environment created to remind youth are “...still connected to life”




Develop staff to build positive and supportive relationships

- Training to include topics around trauma, using humanizing language, de-escalation training, reflective listening, or motivational listening skills, recognizing own explicit/implicit biases



Provide varied, useful, and evidence based programming

- Incorporating community college education and career training
- Developing the ‘whole person’ including bridging medical and physical health needs of the individual both while in-custody as well as when transitioning to the community



Ground practice and culture in knowledge of adolescent development

- Culture of correctional health of staff/professionals in the facility



Treat family members as partners

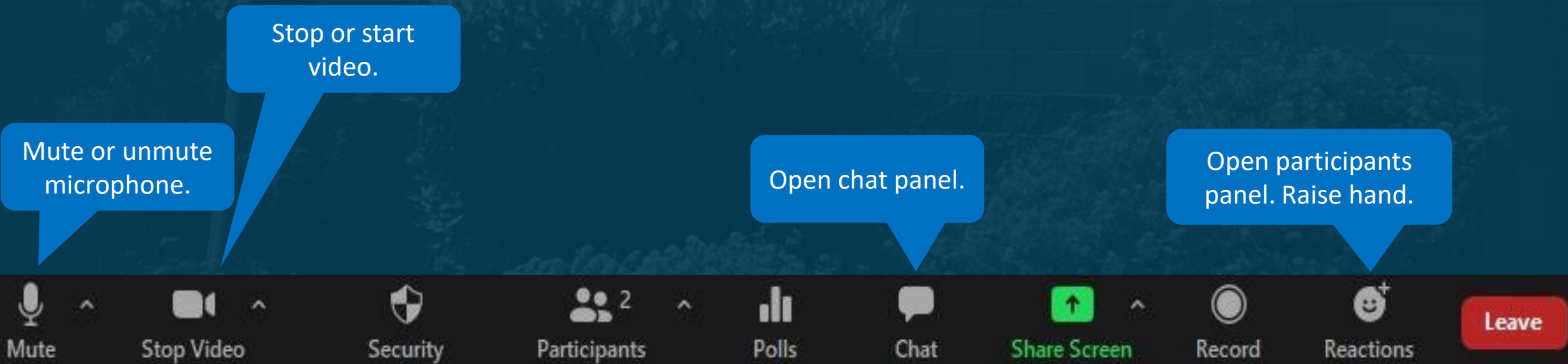
- Provide support to family while youth is in-custody as well as when youth are returning back to their families and the community

Emerging Themes

Your input is requested on the design of our new long-term commitment program at the Susan J. Gionfriddo Juvenile Justice Center

Two options for participation:

1. Open the chat pane and click on the Google Doc to type in your comments
2. Raise your hand using the “raise hand” feature on Zoom to provide your input verbally



The background image shows the exterior of a building with a grey stone wall. The name "SUSAN J. GIONFRIDDO JUVENILE JUSTICE CENTER" is mounted on the wall in white, three-dimensional letters. The letters are arranged in two lines: "SUSAN J. GIONFRIDDO" on the top line and "JUVENILE JUSTICE CENTER" on the bottom line. The word "CENTER" is significantly larger than the other words. In the foreground, there are green bushes with small orange flowers. A dark teal diagonal overlay covers the left side of the image.

SUSAN J. GIONFRIDDO
JUVENILE JUSTICE CENTER

COMMUNITY VIRTUAL LISTENING FORUM

Juvenile Justice Realignment

September 24, 2021